

## RhoA-GTP

**Catalog Number:** 26904

**Gene Symbol:** RHOA

**Description:** Anti-RhoA-GTP Mouse Monoclonal Antibody

**Background:** Small GTPases are a super-family of cellular signaling regulators. RhoA belongs to the Rho sub-family of GTPases. Rho proteins play critical roles in many actin cytoskeleton-dependent processes including platelet aggregation, cell motility, contraction, and cytokinesis. It regulates the formation of stress fibers and focal adhesions in fibroblasts and Ca<sup>2+</sup> sensitivity of smooth muscle contraction.

**Immunogen:** Recombinant full-length protein of active RhoA

**Tested Applications:** IP, IHC, IF

**Recommended Dilutions:**

IP: 1 µg for 1~2 mg total cellular proteins

IHC: 1:100-1:500

IF: 1:100-1:500

**Concentration:** 1.0 mg/ml

**Host:** Mouse

**Clonality:** Monoclonal

**Isotype:** IgG2b, IgM

**Purity:** Purified from ascites

**Format:** Liquid

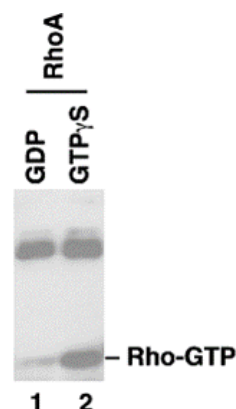
**Preservative:** No

**Constituents:** PBS (without Mg<sup>2+</sup> and Ca<sup>2+</sup>), pH7.4, 150 mM NaCl, 50% glycerol

**Species Reactivity:** Anti-RhoA-GTP antibody only recognizes only active RhoA from vertebrates

**Storage Conditions:** Store at -20°C. Avoid repeated freezing and thawing

### Immunoprecipitation and Western blot:



IP: anti-active RhoA mAb

WB: anti-RhoA mAb

### IP/WB Analysis of Active RhoA Protein.

Purified recombinant RhoA proteins were loaded with GDP (lane 1) or GTPγS (lane 2). These proteins were immunoprecipitated with anti-RhoA-GTP mouse monoclonal antibody (Cat. # 26904). After SDS/PAGE, the membrane filter probed with anti-RhoA mouse monoclonal antibody (Cat. # 26007).

FOR RESEARCH USE ONLY. NOT FOR DIAGNOSTIC APPLICATIONS